



Australian Government  
The Treasury

**TSY/AU**

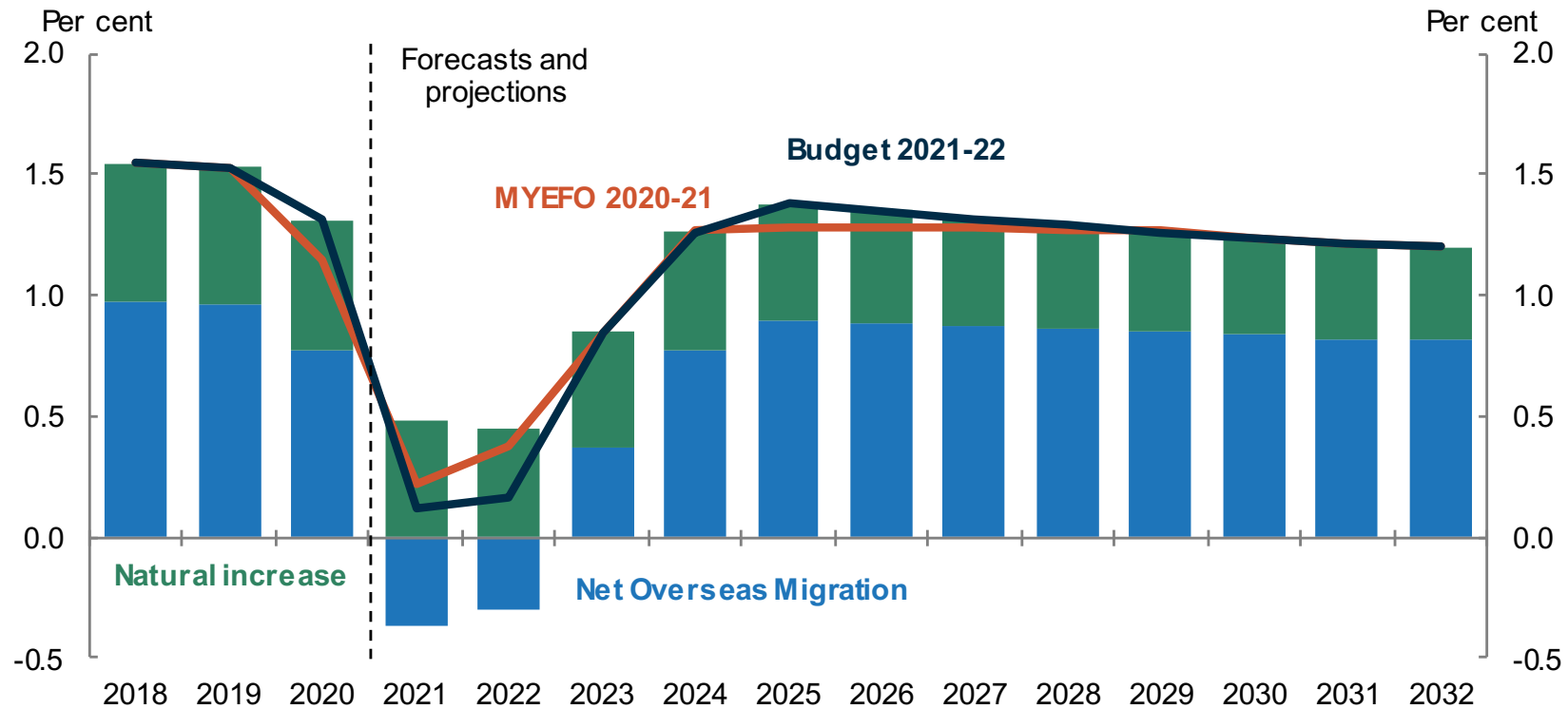
# CEPAR Policy Dialogue on Mature Workers in Organisations

ANU Crawford School of Public Policy, 10 June 2021

Mark Cully

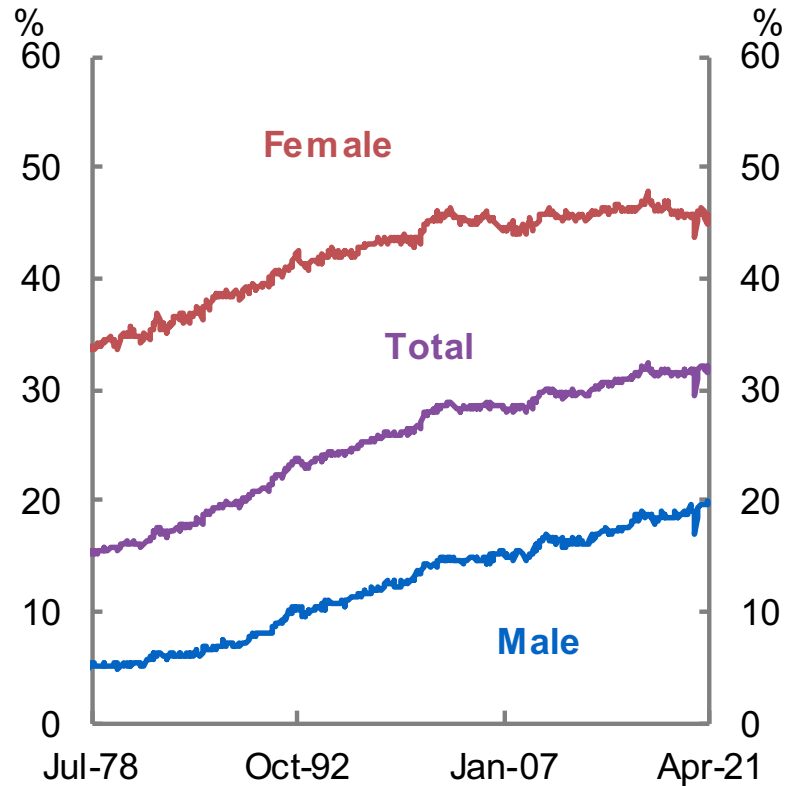
Head, Macroeconomic Analysis and Policy

# Population projections

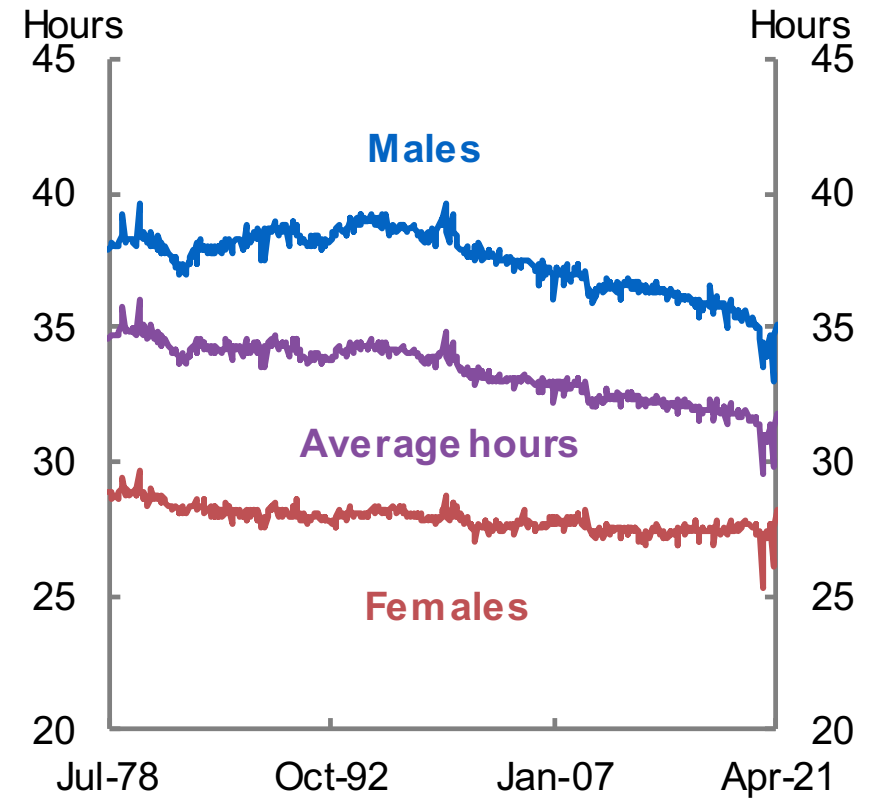


# Part-time employment and hours

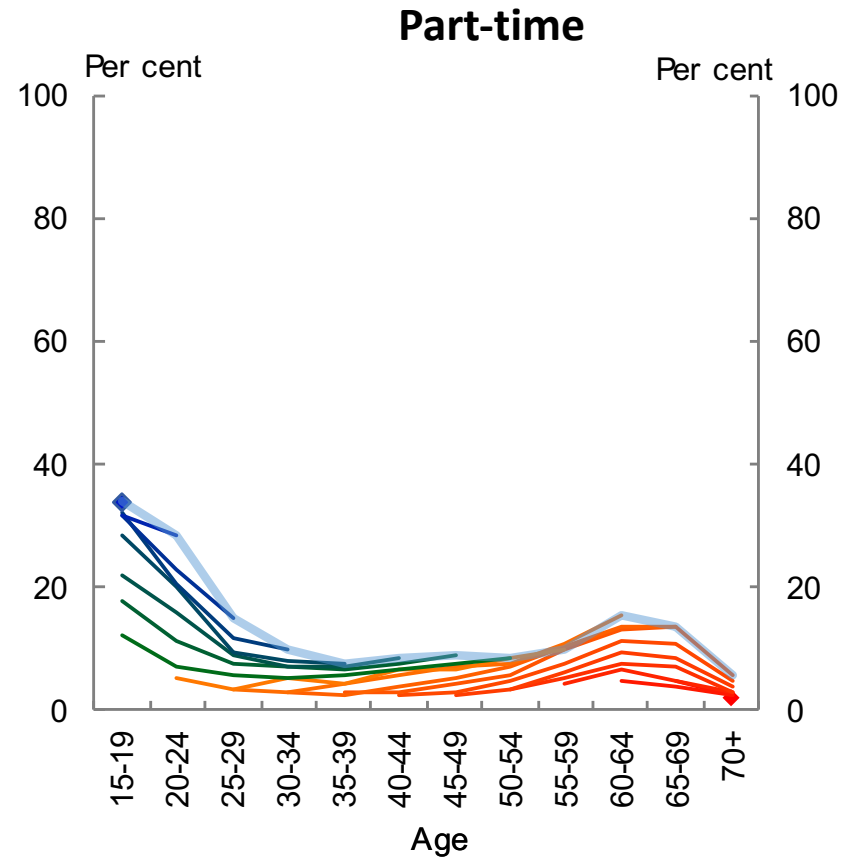
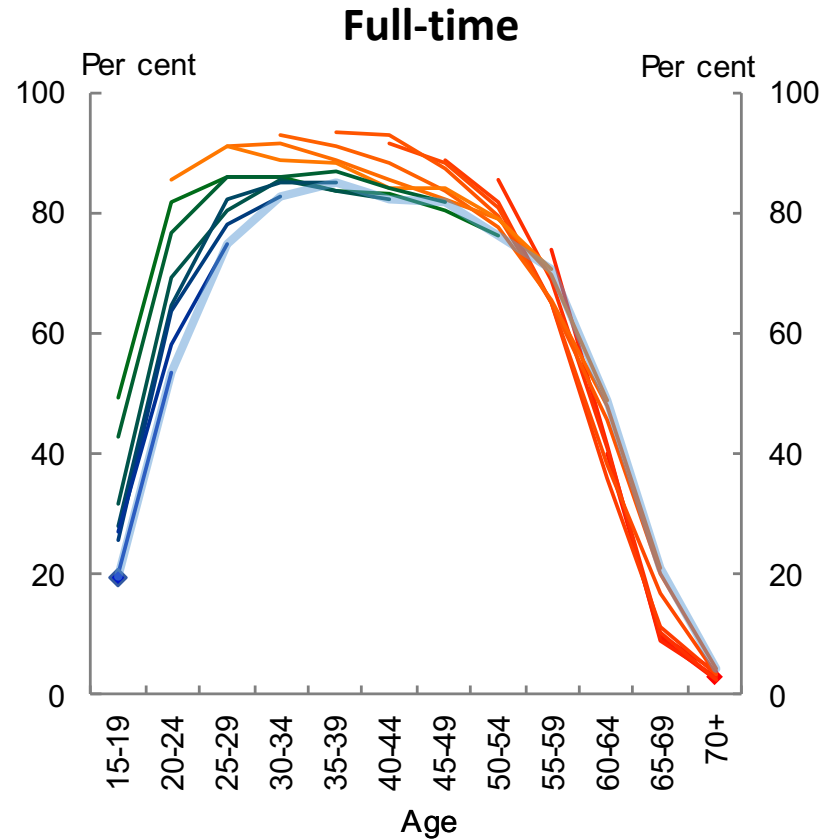
Part-time shares of employment,  
by gender



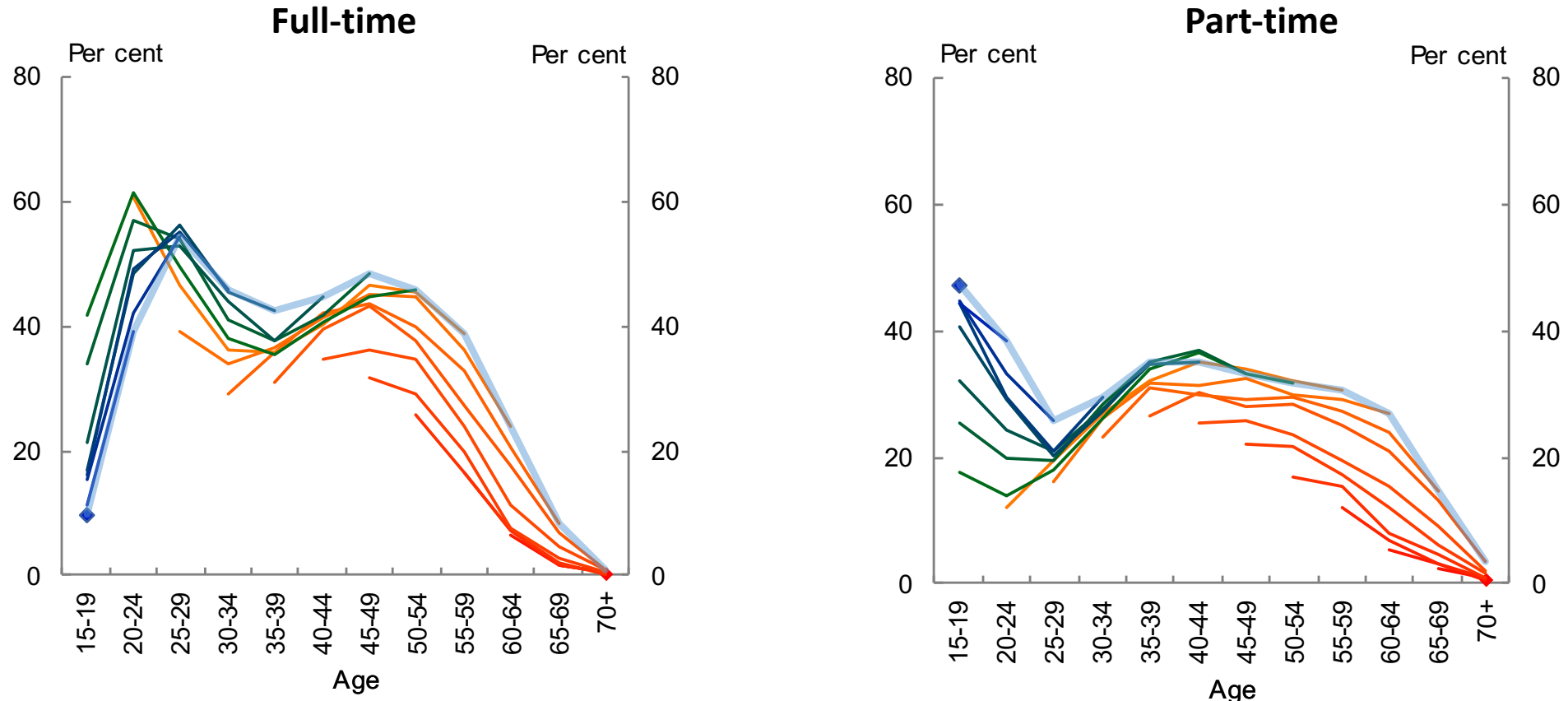
Average hours by gender



# Male participation rates by birth cohort

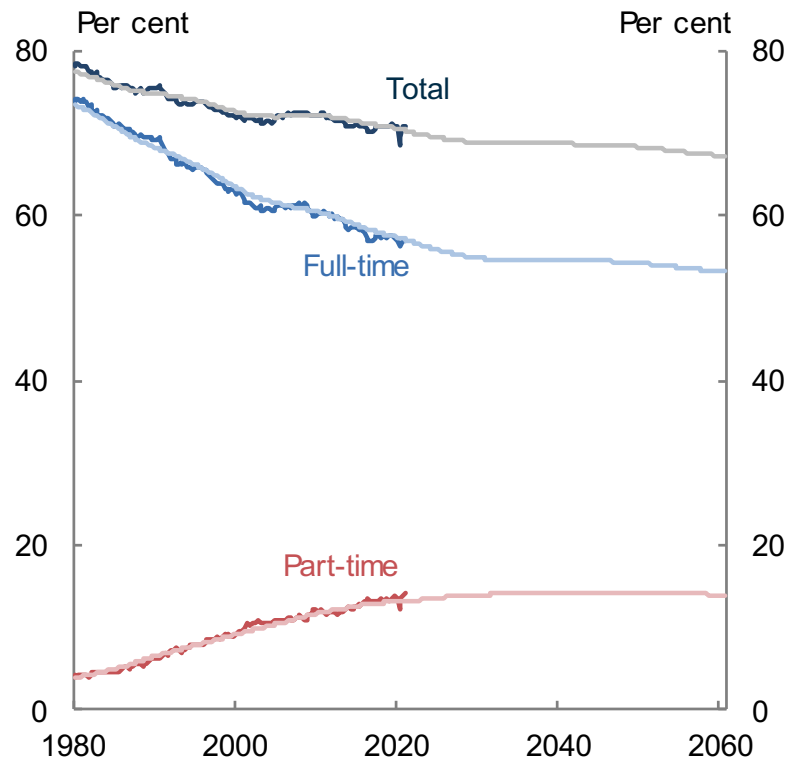


# Female participation rates by birth cohort

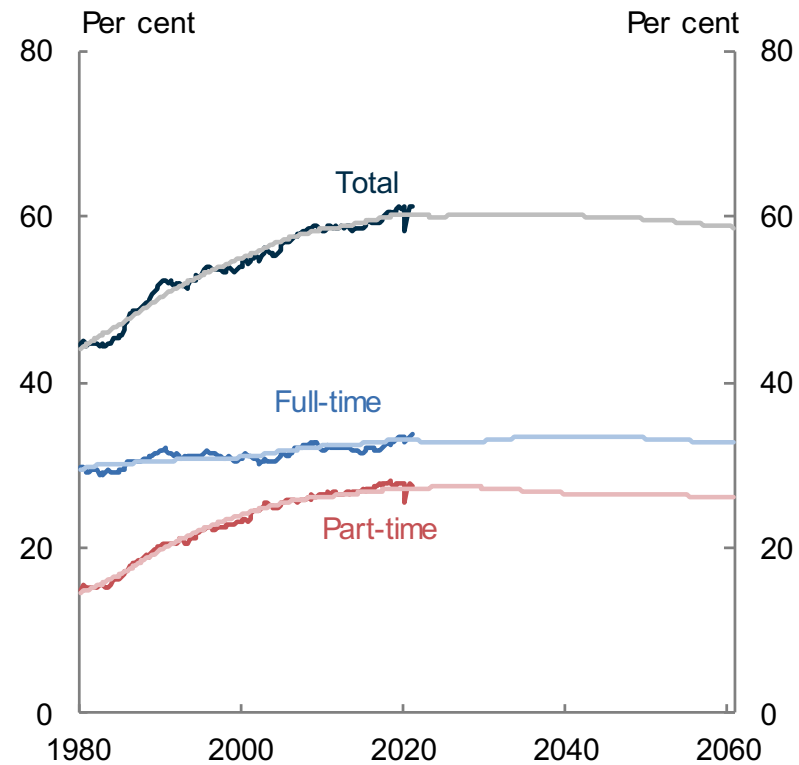


# Participation rate projections by gender

## Male labour force participation rate projections



## Female labour force participation rate projections



# Labour productivity growth and productivity cycles

